

SSEN/WS/2W/WH

Infrared Motion Sensor



Instruction

Welcome to use SSEN/WS/2W/WH infrared motion sensor!

This wall mounted PIR sensor utilizes a good sensitivity detector and integrated circuit for energy-saving, safety and practical functionality. It utilizes infrared technology to detect movement of the human body and will switch on the load once someone enters the detection field. It has an inbuilt photocell to detect between day and nighttime operation.

SPECIFICATION:

Power Source: 220-240V/AC


Power Frequency: 50/60Hz

Ambient Light: <3-2000LUX (adjustable)

Time Delay: Min.10sec±3sec

Max.7min±2min

Rated Load: Max.300W 

150W 

Detection Range: 160°

Detection Distance: 9m max(<24°C)

Working Temperature: -20~+40°C

Working Humidity: <93%RH

Power Consumption: approx 0.5W

Installation Height: 1-1.8m

Detection Moving Speed: 0.6-1.5m/s

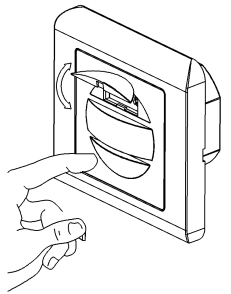
FUNCTIONS:

- Can identify day and night: The installer can adjust the switching point at different ambient light levels. It can operate in both day and night when the dial is set to the "sun" position (max). It can work at night only when the dial is set towards the "3" position (min). As for the adjustment pattern, please refer to the testing pattern.
- Time-Delay is extended continually: During periods of continued occupancy, the sensor will restart the time delay with each detection of movement.

➤ Touch Switch PIR/OFF/ON (3 modes)

When connected with power, the sensor enters into PIR sensor mode.

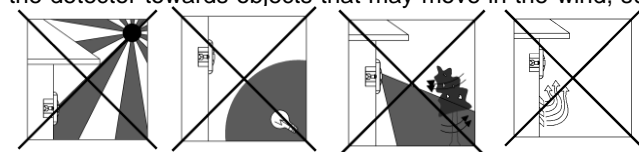
1. Sensor mode
2. OFF - Press the switch once, the load switches off.
3. ON - Press and hold the switch for >3secs to override the lighting ON



INSTALLATION ADVICE:

As the detector responds to changes in temperature, avoid the following situations:

- Avoid pointing the detector towards objects with highly reflective surfaces, such as mirrors etc.
- Avoid mounting the detector near heating vents, air conditioning units, lights etc.
- Avoid pointing the detector towards objects that may move in the wind, such as curtains, tall plants etc.



CONNECTION:



WARNING

- Must be installed by a competent person.
- Disconnect power source.
- Cover or shield any adjacent live components.
- Ensure device cannot be switched on.
- Check power supply is disconnected.

- Remove the faceplate of sensor and adjust the time and LUX knob.(refer to figure 1)
- Loosen the screws in the connection terminal, and then connect the power to the terminal according to the wiring diagram.
- Fit the sensor to the wall box, fixing securely with the screws into the lugs (refer to figure 2).
- Replace the faceplate, switch on the power and then test the sensor functionality.

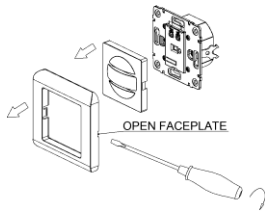


Figure1

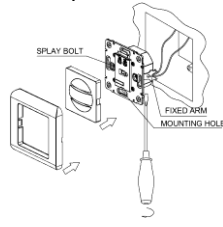
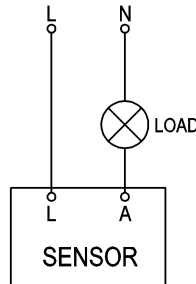


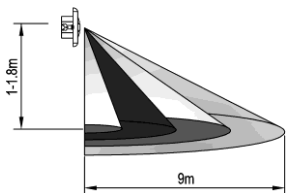
Figure2

CONNECTION-WIRE DIAGRAM:

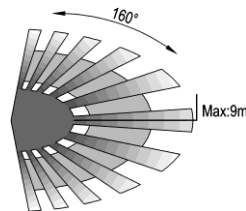
(See the right figure)



SENSOR INFORMATION:



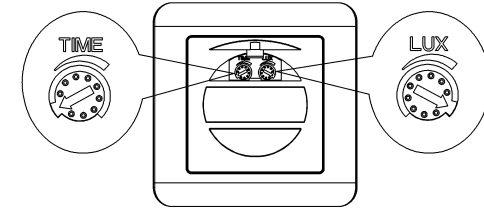
Height of installation: 1-1.8m



Detection Distance: Max.9m

TEST:

- Set "TIME" anti-clockwise to minimum, "LUX" clockwise to maximum.
- Switch on the power; the sensor and its connected lamp will have no signal at the beginning. After a 30sec warm-up period, the sensor will be operational. If the sensor detects movement, the load will turn on. When no further movement is detected, the load should switch off within $10\text{sec} \pm 3\text{sec}$.
- Set "LUX" anti-clockwise to minimum, if the ambient light is more than 3LUX, the sensor will switch the load off. If the ambient light is less than 3LUX (darkness), the sensor will switch on the load. With no occupancy detected, the sensor will stop working within $10\text{sec} \pm 3\text{sec}$.
- For switch operation PIR/OFF/ON test, please check the 'FUNCTIONS' section.



Note: when testing in daylight, please turn LUX knob to ☀ (SUN) position, otherwise the sensor lamp may not work!

TROUBLESHOOTING:

- The load does not work:
 - a. Please check if the connection of power source and load is correct.
 - b. Please check if the load is operational.
 - c. Please check the light level setting.
- The sensitivity is poor:
 - a. Please check if the sensor is obstructed from detecting movement.
 - b. Please check if the ambient temperature is too high.
 - c. Please check if the movement is in the detection field.
 - d. Please check if the installation height corresponds to the height required in the instruction.
- The sensor can not shut off the load automatically:
 - a. Please check if there is continual movement in the detection field.
 - b. Please check if the time delay is set to the maximum duration
 - c. Please check if the wiring corresponds to the instruction