



Highbay EcoMax G2

- Cost effective highbay solution
- Elegant slim design
- Up to 60% energy saving compared to HID solutions
- Reflectors, bracket and IP68 connector available as accessory



Specifications

Item Code	Item Description	Equivalent to (W)	Power (W)	Lumen	Efficacy (lm/W)	CCT (K)	Beam angle	Weight (kg/pc)
On-Off								
545001047200	LEDHighbay-E2 80W-840-W	HID 250W	80	10400	130	4000	90°	1.79

Accessories



545098006100
LEDHighbay-E2 Reflector-Rd407

545098006000
LEDHighbay-E2 Bracket-L249

543098021900
LEDFixture-IP68-Connector-Kit-3

Packaging Information

Item		Box					
Item Code	Item Description	Commodity Code	Dimensions (mm) (LxWxH)	Gross Weight (kg)	EAN	pc/box	
545001047200	LEDHighbay-E2 80W-840-W	94051190	317x317x115	2.00	6941497758125	1	
543098021900	LEDFixture-IP68-Connector-Kit-3	73121049	265x245x205	3.00	6941497708991	1	
545098006000	LEDHighbay-E2 Bracket-L249	94059900	249x165x63	0.56	6941497757937	1	
545098006100	LEDHighbay-E2 Reflector-Rd407	94059900	407x407x146	0.57	6941497757913	1	

Technical Specifications	
Lifetime (L70)	50,000 h
Lifetime (L80)	30,000 h
On-/Off-cycles	100,000
Colour consistency (SDCM)	4
Dimmability	On-Off
Finishing	Grey Pantone 417U
Colour rendering index CRI	≥ 80
Degree of protection (IP)	IP65
Impact strength	IK08
Protection class	I
Risk group (EN 62471)	RG1
With control gear	Yes
Glow wire test	850°C
Driver failure rate (at 5,000 hrs)	1 %
Power factor	≥ 0.9
Surge protection	4 kV

Electrical Supply	
Frequency	50/60 Hz
Nominal voltage	220-240 V AC
DC input voltage	No
230V Cable length	1 m

Mechanical Properties	
Housing material	Aluminium
Optical material	Polycarbonate
Cover material	Polycarbonate

Ambient Conditions	
Operating temperature	-30-+50°C
Application temperature	+25°C
Storage environment	-30-+50°C



ENERGY

OPPLE Lighting
545001047200

A
B
C
D
E
F
G

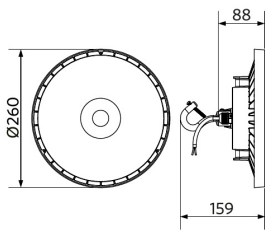
D

80
kWh/1000h

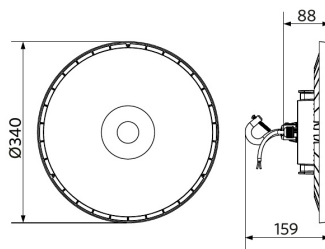
2019/2015

Dimensional Drawing (mm)

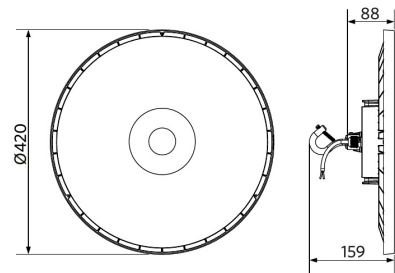
LEDHighbay-E2 80W



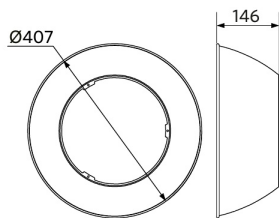
LEDHighbay-E2
120W & 150W



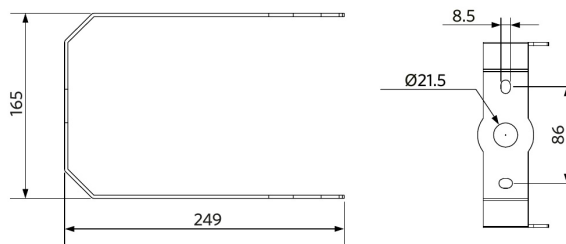
LEDHighbay-E2
200W & 240W



LEDHighbay-E2 Reflector-Rd407



LEDHighbay-E2 Bracket-L249



Photometric Data

